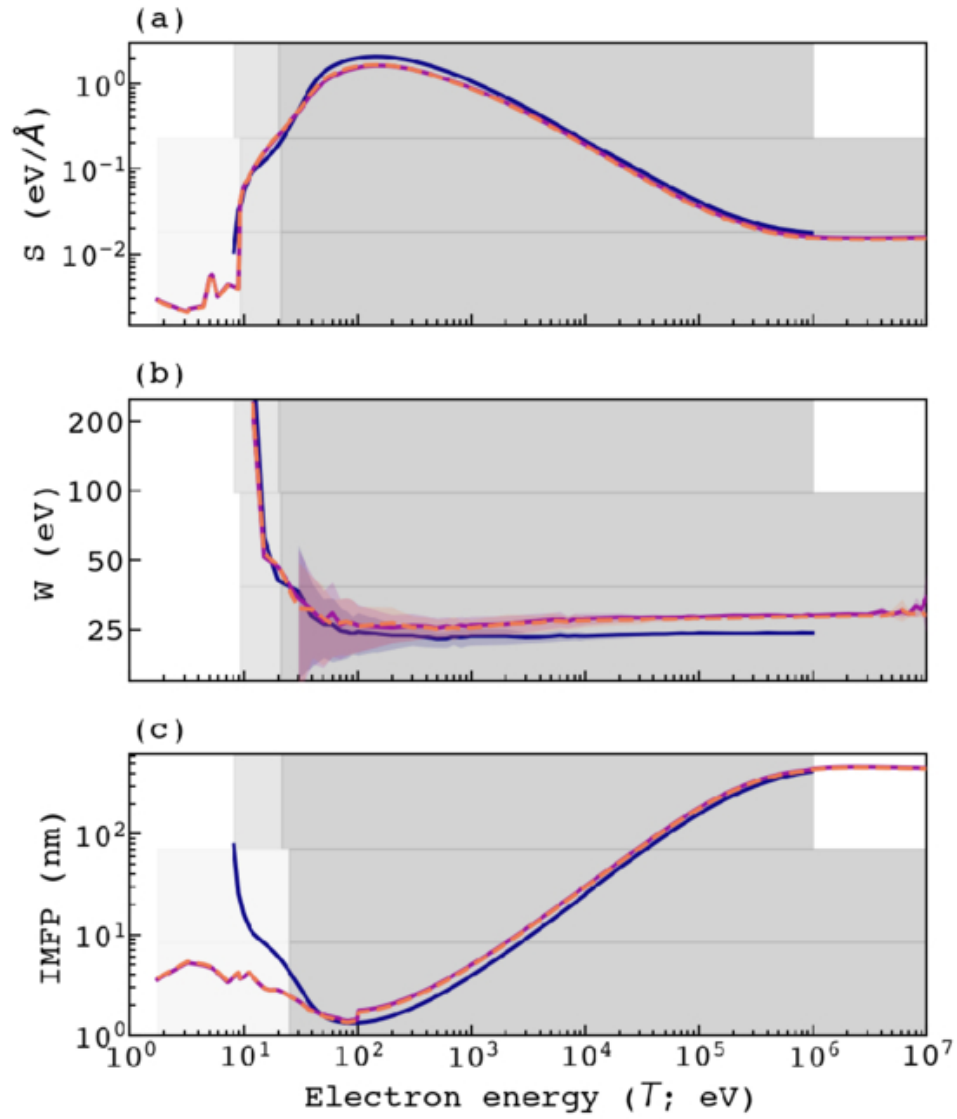


Figure 6. from
Gideon Yoffe et al 2026 *Astrophys. J. Suppl.* 284 doi:10.3847/1538-4365/ae6b7a
<https://dx.doi.org/10.3847/1538-4365/ae6b7a>
© 2026. The Author(s). Published by the American Astronomical Society.



— Water — Amorphous ice - - - Hexagonal ice