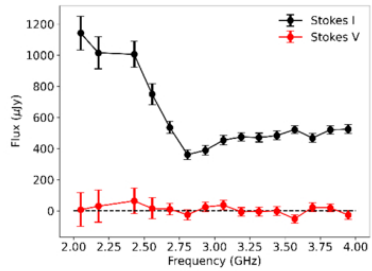
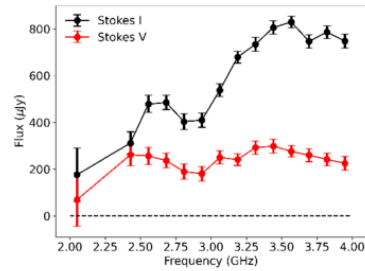


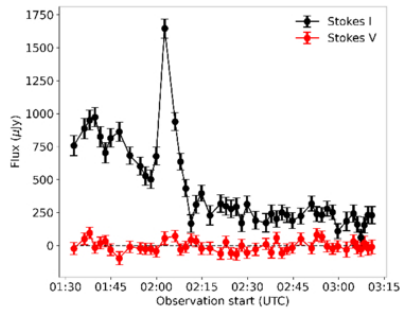
Figure 9. from
 Margaret E. Ridder et al 2026 *Astrophys. J.* 1004 doi:10.3847/1538-4357/ae69d5
<https://dx.doi.org/10.3847/1538-4357/ae69d5>
 © 2026. The Author(s). Published by the American Astronomical Society.



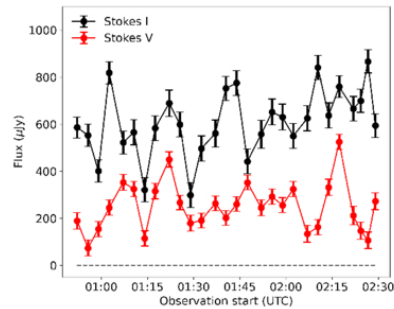
(a) The 2–4 GHz SED of V2400 Oph on August 9.



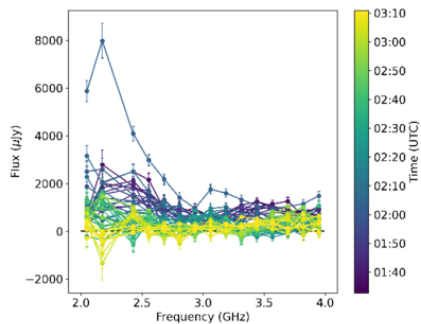
(b) The 2–4 GHz SED of V2400 Oph on August 15.



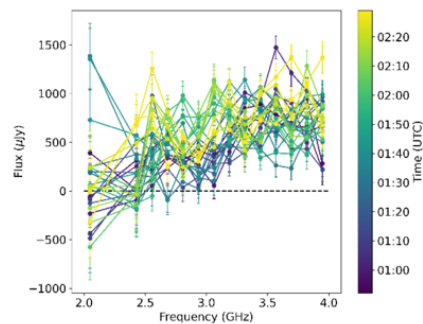
(c) The 2–4 GHz light curve of V2400 Oph on August 9.



(d) The 2–4 GHz light curve of V2400 Oph on August 15.



(e) The 2–4 GHz dynamic SED of V2400 Oph in Stokes I on August 9.



(f) The 2–4 GHz dynamic SED of V2400 Oph in Stokes I on August 15.