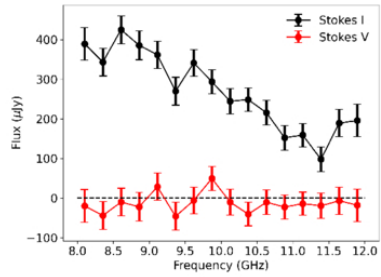
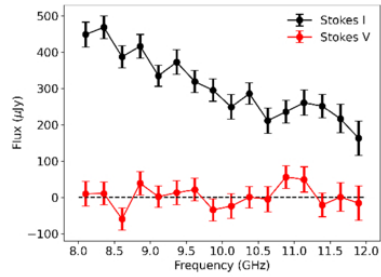


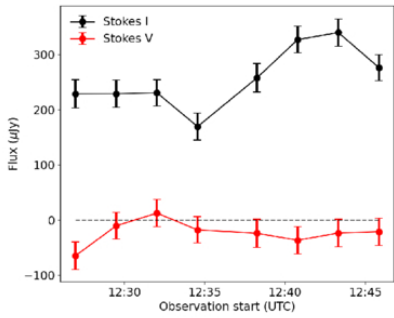
Figure 7. from
Margaret E. Ridder et al 2026 *Astrophys. J.* 1004 doi:10.3847/1538-4357/ae69d5
<https://dx.doi.org/10.3847/1538-4357/ae69d5>
© 2026. The Author(s). Published by the American Astronomical Society.



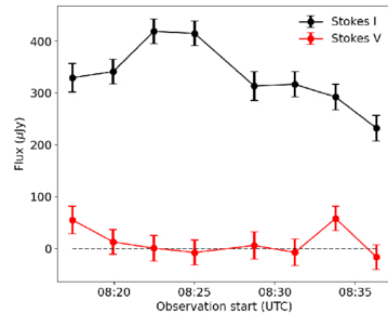
(a) The 8–12 GHz SED of V2400 Oph on April 25.



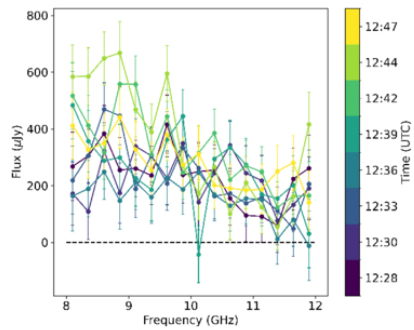
(b) The 8–12 GHz SED of V2400 Oph on May 11.



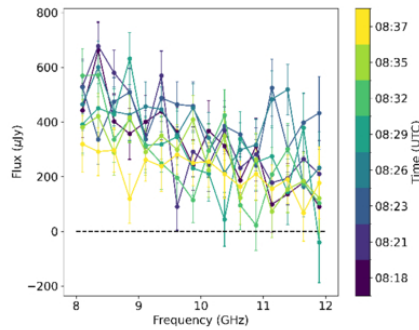
(c) The 8–12 GHz light curve of V2400 Oph on April 25.



(d) The 8–12 GHz light curve of V2400 Oph on May 11.



(e) The 8–12 GHz dynamic SED of V2400 Oph in Stokes I on April 25.



(f) The 8–12 GHz dynamic SED of V2400 Oph in Stokes I on May 11.