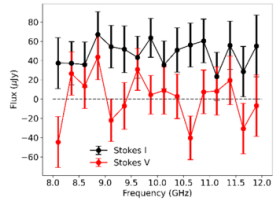
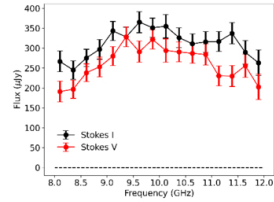


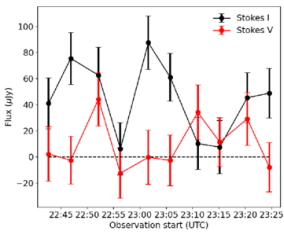
Figure 5. from  
 Margaret E. Ridder et al 2026 *Astrophys. J.* 1004 doi:10.3847/1538-4357/ae69d5  
<https://dx.doi.org/10.3847/1538-4357/ae69d5>  
 © 2026. The Author(s). Published by the American Astronomical Society.



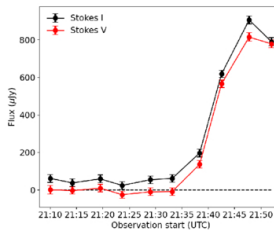
(a) The 8–12 GHz SED of MR Ser on October 11.



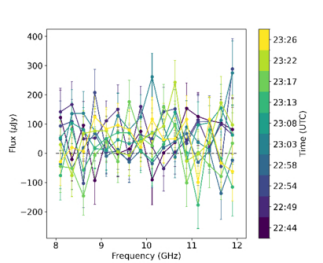
(b) The 8–12 GHz SED of MR Ser on November 25.



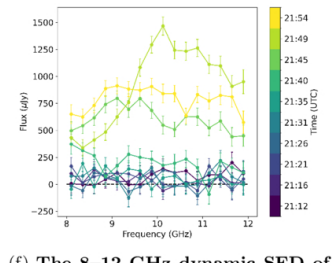
(c) The 8–12 GHz light curve of MR Ser on October 11.



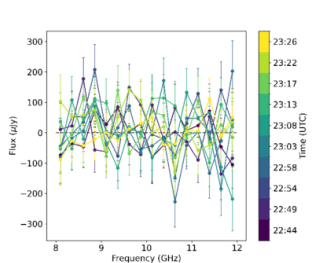
(d) The 8–12 GHz light curve of MR Ser on November 25.



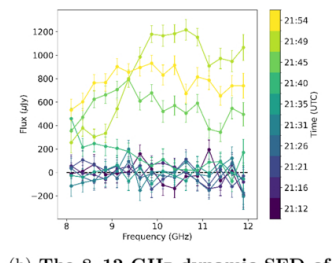
(e) The 8–12 GHz dynamic SED of MR Ser in Stokes I on October 11.



(f) The 8–12 GHz dynamic SED of MR Ser in Stokes I on November 25.



(g) The 8–12 GHz dynamic SED of MR Ser in Stokes V on October 11.



(h) The 8–12 GHz dynamic SED of MR Ser in Stokes V on November 25.