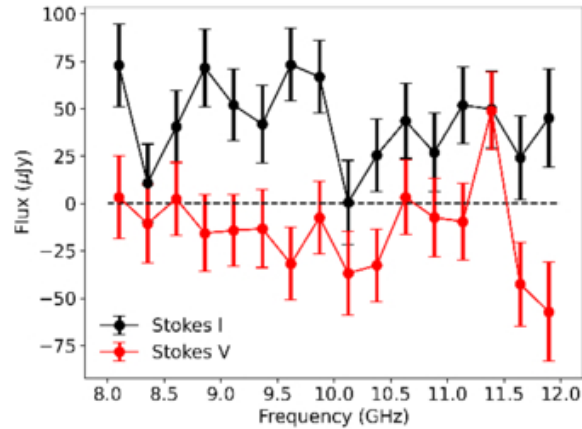
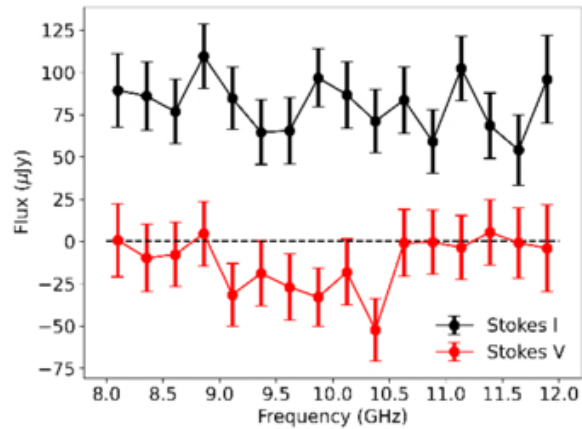
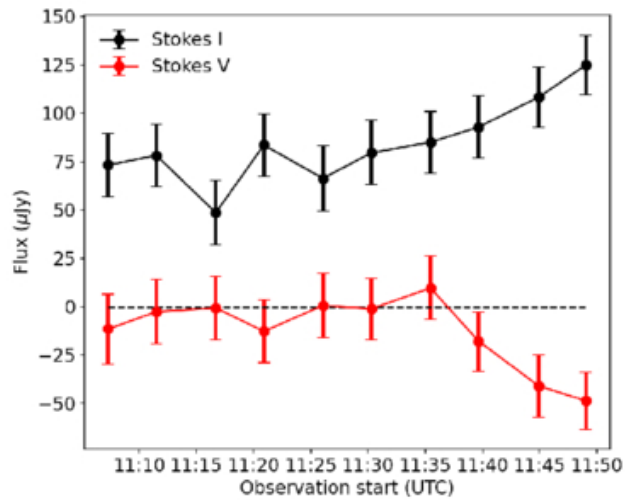


Figure 3. from
 Margaret E. Ridder et al 2026 *Astrophys. J.* 1004 doi:10.3847/1538-4357/ae69d5
<https://dx.doi.org/10.3847/1538-4357/ae69d5>
 © 2026. The Author(s). Published by the American Astronomical Society.

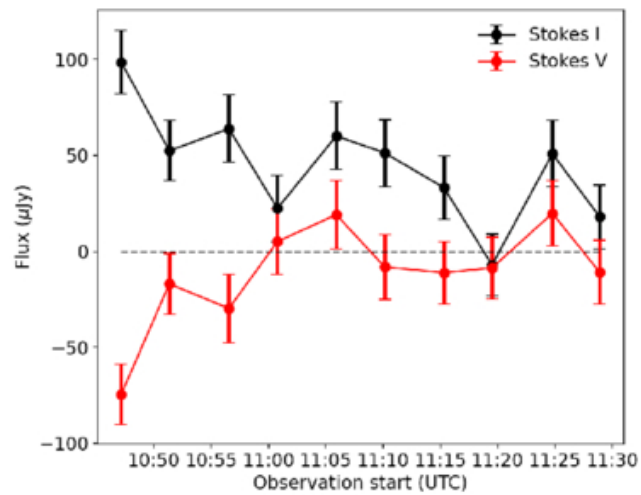


(a) The 8–12 GHz SED of ST LMi on November 1.

(b) The 8–12 GHz SED of ST LMi on November 5.



(c) The 8–12 GHz light curve of ST LMi on November 1.



(d) The 8–12 GHz light curve of ST LMi on November 5.