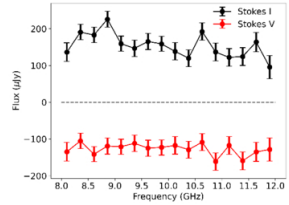


Figure 1. from

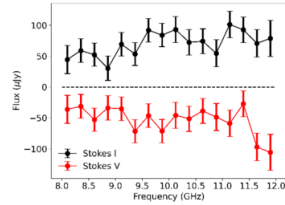
Margaret E. Ridder et al 2026 *Astrophys. J.* 1004 doi:10.3847/1538-4357/ae69d5

<https://dx.doi.org/10.3847/1538-4357/ae69d5>

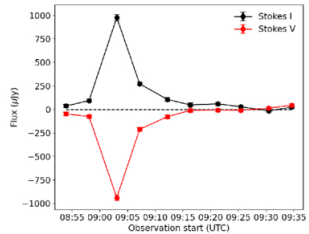
© 2026. The Author(s). Published by the American Astronomical Society.



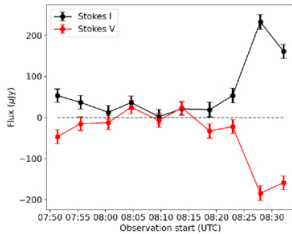
(a) The 8–12 GHz SED of EF Eri on September 28.



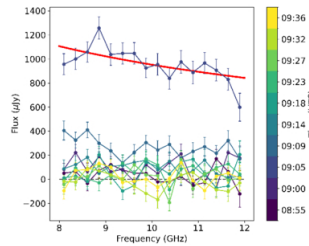
(b) The 8–12 GHz SED of EF Eri on October 2.



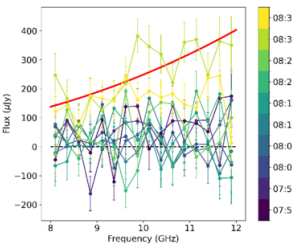
(c) The 8–12 GHz light curve of EF Eri on September 28.



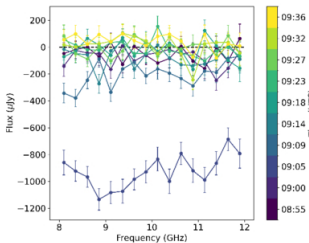
(d) The 8–12 GHz light curve of EF Eri on October 2.



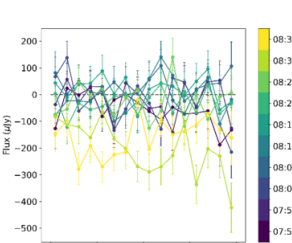
(e) The 8–12 GHz dynamic SED of EF Eri in Stokes I on September 28.



(f) The 8–12 GHz dynamic SED of EF Eri in Stokes I on October 2.



(g) The 8–12 GHz dynamic SED of EF Eri in Stokes V on September 28.



(h) The 8–12 GHz dynamic SED of EF Eri in Stokes V on October 2.