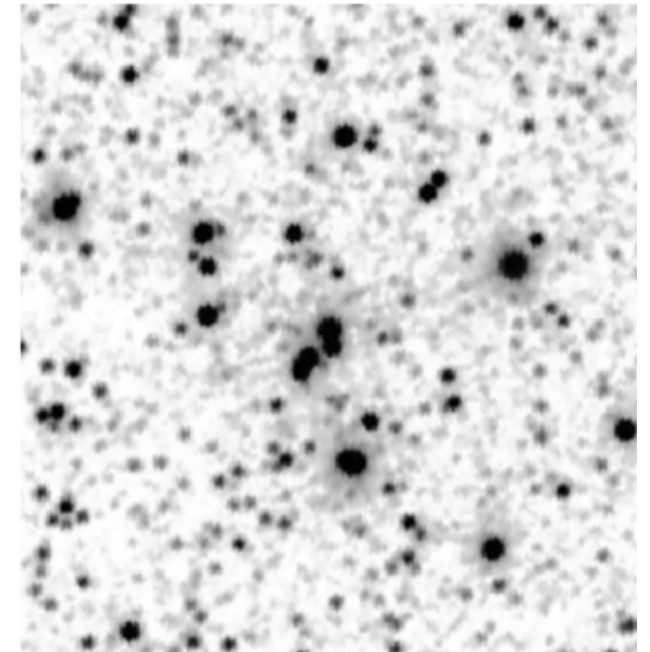
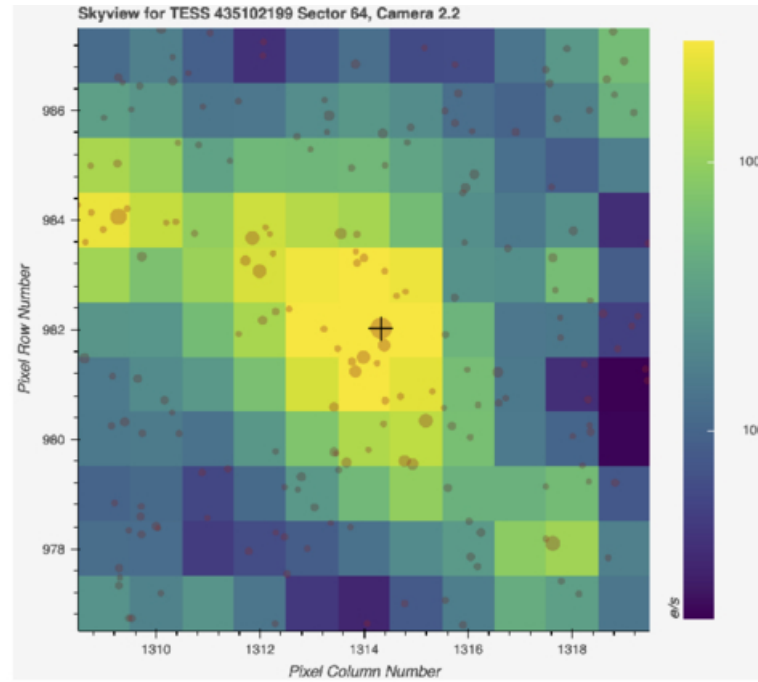
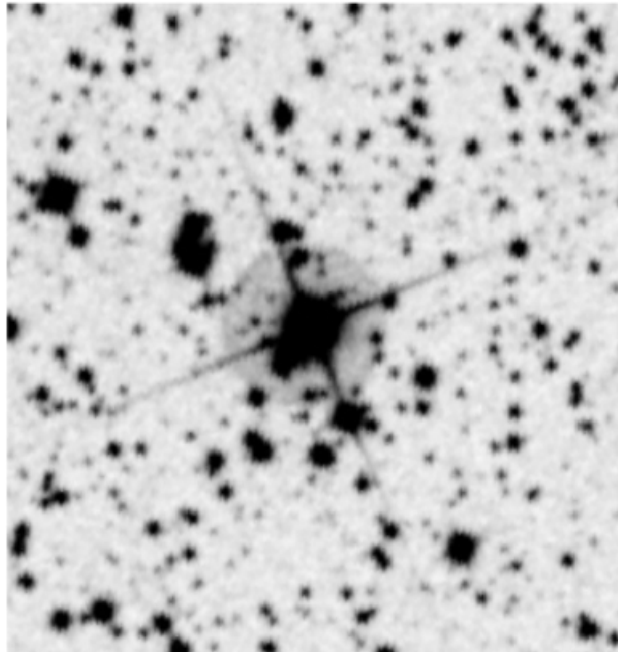


Figure 1. from
Gökhan Yücel et al 2026 Astron. J. 172 doi:10.3847/1538-3881/ae6cfb
<https://dx.doi.org/10.3847/1538-3881/ae6cfb>
© 2026. The Author(s). Published by the American Astronomical Society.



(a) The *DSS2* *B*-band field of view around ET Cru.

(b) The *TESS* field of view around ET Cru in Sector 64.

(c) The *2MASS* combined *JHK*-band field of view around ET Cru.