

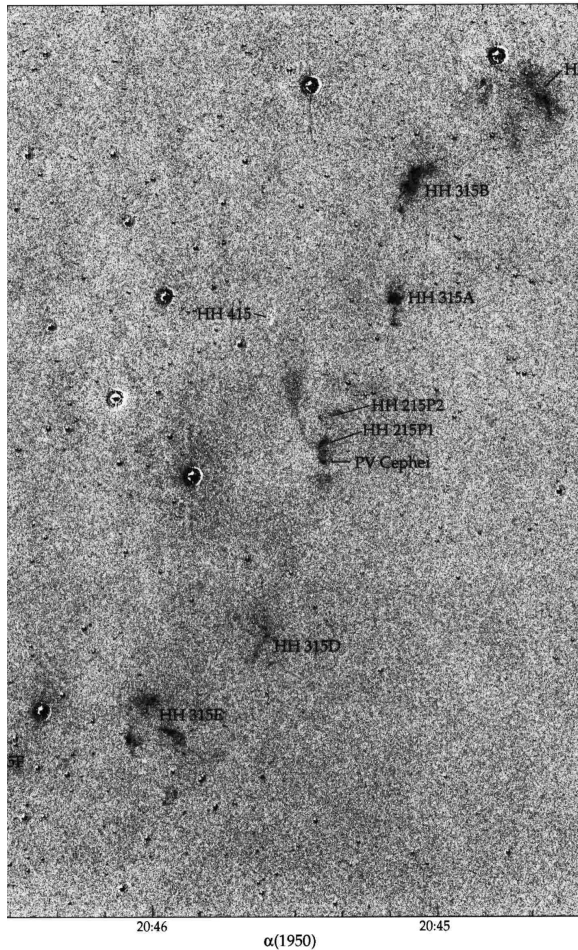
Figure from Giant Herbig-Haro Flows

Reipurth 1997 AJ 114 2724 doi:308158864287067800170087_doi:10.1086/118681

https://dx.doi.org/308158864287067800170087_doi:10.1086/118681

The Astronomical Journal

.. GIANT HERBIG-HARO FLOWS



HH 315 flow around PV Cephei as in Fig. 12, but with the H α and [S II] images subtracted, such that the flow is white.

sion period of about 6000 yr. Since any of the knot groups should be happen to define the full precession lower limits. In a model of the HH 97) suggest a precession period of agreement with the above simple

from PV Cep, and if we compare his CO objects, we find that all of groups A, B, and C inside the blue CO lobe, indeed the finely t C fits nicely with Levreaults outermost con lobe is much more compact, and terminates knot group D. As can be seen in Fig. 12, t