

Figure from Giant Herbig-Haro Flows  
Reipurth 1997 AJ 114 2724 doi:308158864287067800170087\_doi:10.1086/118681  
[https://dx.doi.org/308158864287067800170087\\_doi:10.1086/118681](https://dx.doi.org/308158864287067800170087_doi:10.1086/118681)  
The Astronomical Journal

∴ GIANT HERBIG-HARO FLOWS

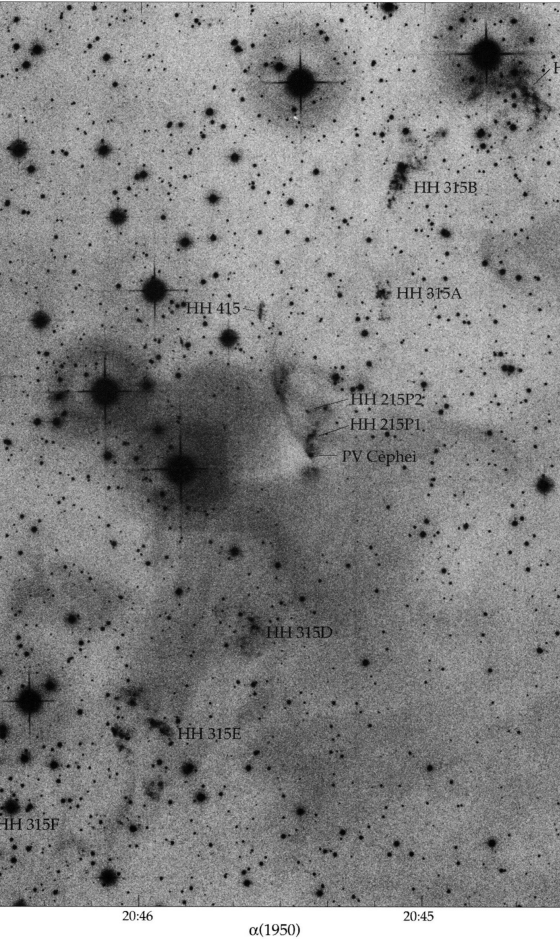


Figure 1. A widefield  $H\alpha + [S II]$  CCD image obtained at the KPNO 0.9 m telescope. The image is 14 by 18 arcmin.

most groups C and F are distinctly groups are shown with identifiable tangential motions of the order ages of the pairs A/D and B/E and 500 yr, 4500 yr, and 6500 yr, suggest every 2000 yr.

precessing. The projected angle between the of group B and the westernmost part of group PV Cep is 20 degrees. We find a somewhat the red lobe of about 32 degrees. If we assume and C represent almost the extremes of the cone, then the precession period for the bl