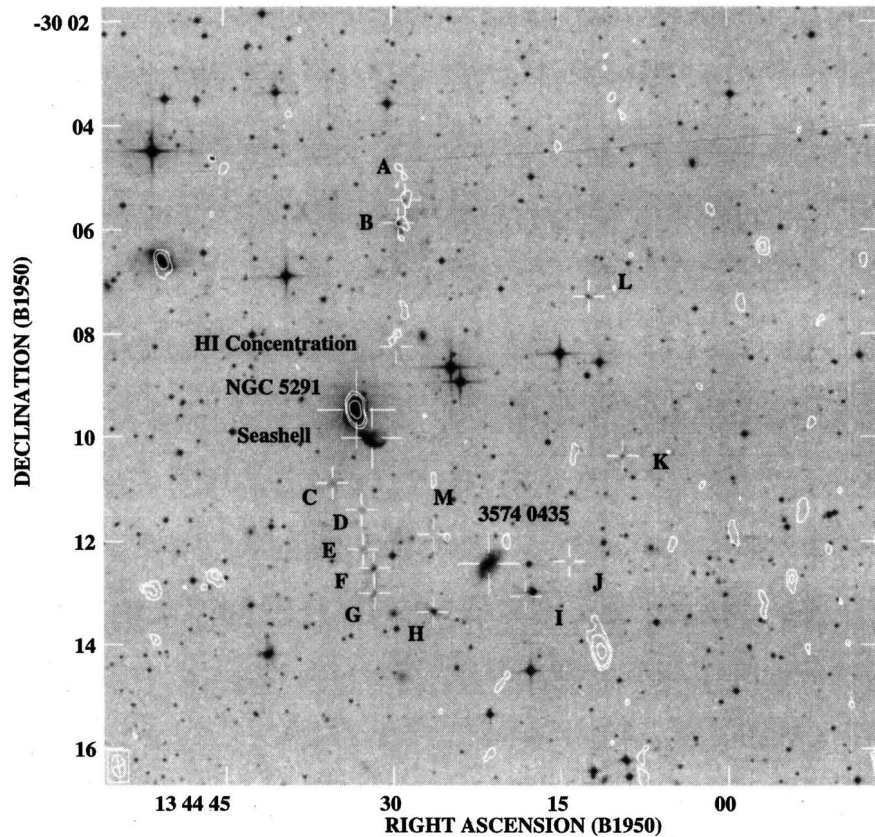


ET AL.: NGC 5291



Contours over optical image. Contour levels correspond to 3, 5, and  $10\sigma$  ( $1\sigma=2.7\times10^{-4}$  Jy/beam). The beams in the lower right corner. Optical and H I knots are indicated with labeled crosses.

brightness temperature in Kelvin and  $\nu$  is the frequency. The peak column densities found for the (the galaxies and knots) on the moment Table 3. These values were determined from data which is most sensitive to ex-

The integrated flux from the H I gas may be obtained by integrating Eq. (1) over the solid angle subtended by the feature, and expressing the brightness temperature of the observed flux  $S(\nu)$ . The H I mass may then be calculated as follows (Mihalas & Binney 1981):